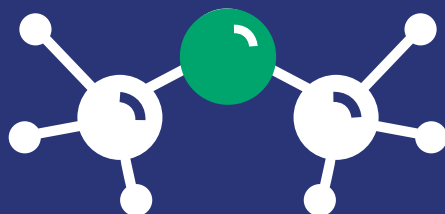


 **Dimeta**



Advancing the production and use of

Renewable & Recycled Carbon DME

to accelerate decarbonisation
of the off-grid energy sector

What is DME?

Renewable and recycled carbon DME is a safe, clean-burning, sustainable fuel that can support decarbonisation of the off-grid energy sector including domestic and commercial heating and cooking, industry and transport.



Why DME?



CHEMICALLY SIMILAR
to LPG



EASILY TRANSPORTED
as a liquid in pressurised
cylinders and tanks



CAN BE BLENDED WITH LPG
and used in existing
applications



**CAN REDUCE GHG
EMISSIONS BY UP TO 85%**
compared to heating oil and
can even reach 100% with
carbon capture



EASILY DISTRIBUTED
using existing LPG
infrastructure at the same
pressure



CAN BE PRODUCED TODAY
from wide range of
sustainable, locally sourced,
feedstocks



**DME HAS BEEN
USED SAFELY**
in industrial applications
for decades



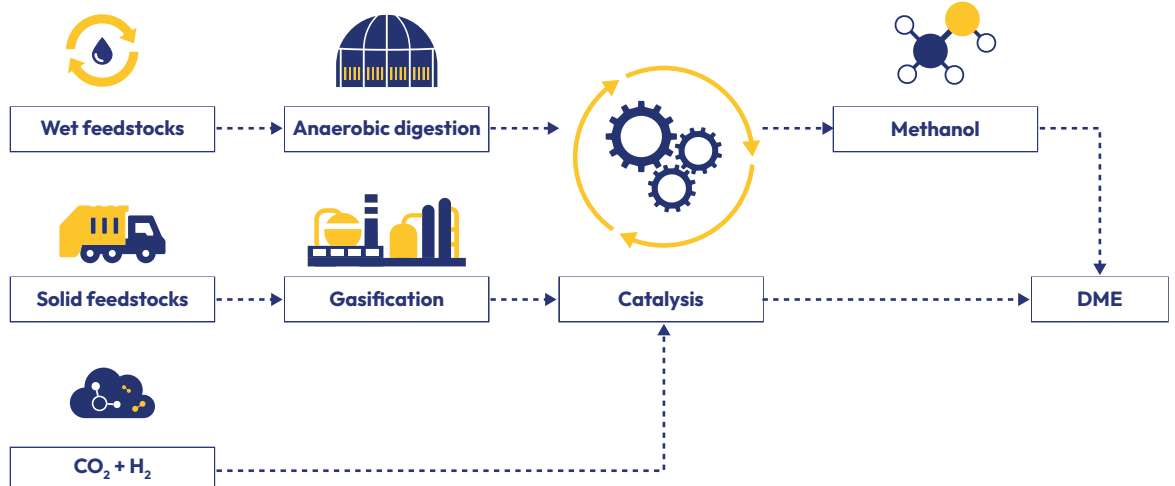
**SIMILAR TO LPG,
SUBSTANTIALLY REDUCES
POLLUTANTS SUCH AS NOx,
SOx AND PM** compared to
solid and liquid fuels

How can Renewable & Recycled Carbon DME be produced?

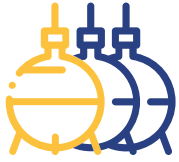
DME can be produced from a wide range of sustainable feedstocks including

- ✓ Biogenic material such as manure, organic fraction of waste streams, and other biomass
- ✓ Non-organic fraction of municipal waste such as non-recyclable plastics and tyres
- ✓ Renewable hydrogen and captured CO₂

DME can be produced using a range of technologies including gasification or electrolysis



Dimeta scales up Renewable & Recycled Carbon DME supply



WHOLESALE TO LPG
INDUSTRY



300,000
TONNES OF DME



OVER
\$1 BN
AGGREGATE INVESTMENT

Dimeta is targeting the development of **300,000 tonnes of Renewable and Recycled Carbon DME** production capacity per year by 2027. The aggregate investment is estimated to be **over \$1 billion**.

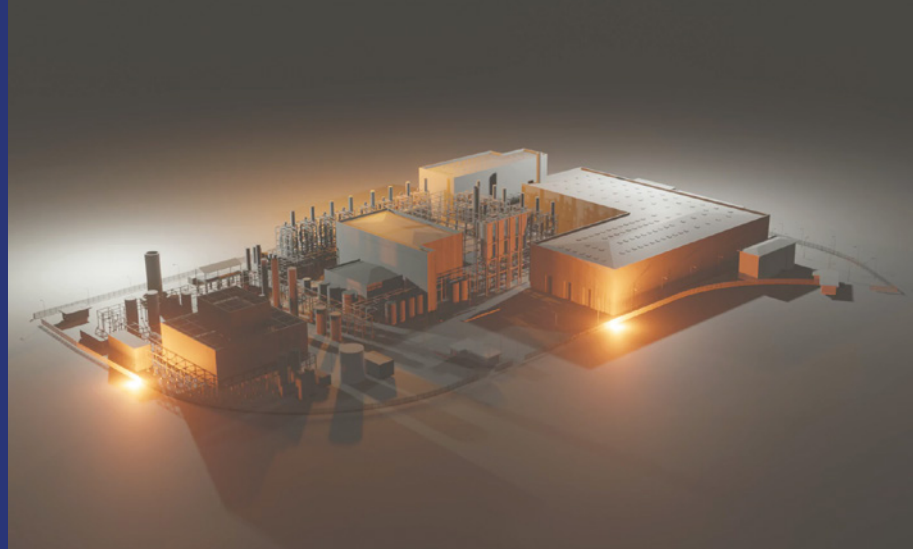
First of a kind waste-to-DME plant in the UK



Dimeta's first major project, Circular Fuels Ltd (CFL) is a joint venture between Dimeta and KEW technology. CFL is a specialised project development company, which develops construction-ready DME plants using KEW's proprietary advanced gasification technology.

The first plant has been announced in the UK, where Dimeta plans to produce **50,000 tonnes per year** of DME from mixed waste. The production facility located in Teesside, one of the UK's leading decarbonising industrial clusters, shall be in operation in 2025 and will create **250 jobs in construction**, as well as **50 jobs during operation**.

Subsequent plants with CFL are already in development in mainland Europe and the USA.



New Partnerships

October 2022:

Dimeta partnered with Canada-based company Enerkem to explore the opportunity for the development of renewable and recycled carbon DME plants in North America and Europe.



March 2023:

Dimeta signed an agreement with NextChem & MyRechemical to explore new opportunities to develop plants for the production of DME from waste, as well as carry out R&D activities.



How we support the growth of DME

- ✓ Identify partners and frameworks for developing DME production plants
- ✓ Work with partners through all stages of plant development
- ✓ Provide a long-term stable offtake contract, backed by international LPG distribution companies
- ✓ Advocate support for DME and facilitate adoption



Dimeta works across the whole value chain



We are actively looking for collaborations on:

R&D and innovative production technologies

